

# Trending



WORDS PRAGNYA RAO PHOTOGRAPH MINDTHEGAP

[mindthegap.com](http://mindthegap.com)

This setting by Mind the Gap is a whole mood. Airy, verdant with bright pops of colour, we definitely want a seat at this summer ready table. Dressed up in the Woodstock collection with the Kapadokia Indigo Wool Kilim Rug at the centre, it is a quick lesson on freshening up your space.





## Carnival at home

Summer always calls for a cheerful update, and the latest collection, Cirque du Soleil by House of Things with its whimsical aesthetic and bright colours channels the joy of the carnival experience. We especially love the Cirque Art Cabinet by The Edit, with its colourful, panelled front that could pass off for a piece of art by itself. [thehouseofthings.com](http://thehouseofthings.com)



## Here comes the sun

There's something so cooling about the fabrics by Nesterra. The hand-printed flowers, bird motifs in whites, pastels and light, cool greys have such a breezy feel, the easiest way to bring the outdoors in this season. [nesterra.com](http://nesterra.com)



## Forest of gold

While we are all for summery florals and pops of colours, we can't help but be distracted by little blobs of gold. The whimsical and joyful, little animal drawer handles by Pullcast are technically from the kids collection but who said adults couldn't crush over them? Finished in polished brass, we feel it will sit pretty on our mini chest of drawers. [pullcast.eu](http://pullcast.eu)

## Ciao India!

One of our favourite furniture brands, B&B Italia, has now made its first home in the country. Scala Home recently launched B&B Italia's flagship store in the capital. Designed as an experiential space, it allows you to soak in the luxury at an unhurried pace. Whether you wish to lounge on the Camaleonda sofa or sink into the epochal Serie Up Armchair, it has on display some of the finest names in design. Instagram: [@scala.home](https://www.instagram.com/scala.home); [beitalia.com](http://beitalia.com)



## Birds of a feather

For those that prefer a pastel-hued summer, the Heron rug by the Rug Society is a perfect fit. Finished in a dusty pink, the design features different heights of hand-tufted botanical silk, giving the rug a three-dimensional feel that makes it stand out in every room. Will it make your living room style quotient soar? We think so. [rugsociety.eu](http://rugsociety.eu)



## Seaside charm

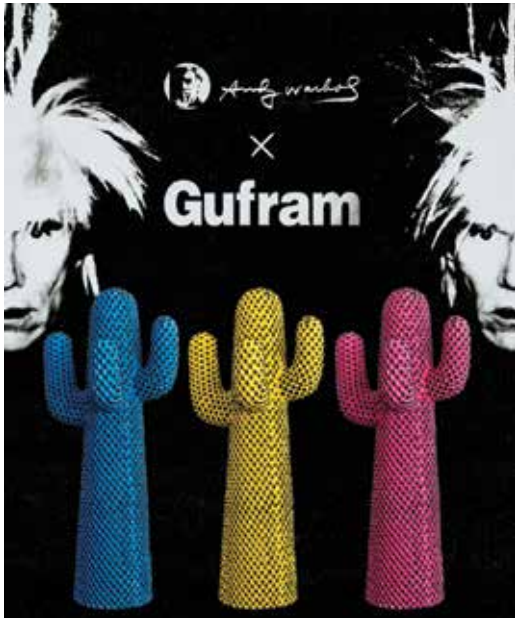
It reminds us of languid afternoons by the sea with warm breeze and endless plates of fruits de mer (fruits of the sea). The Bord de Mer collection by Italian brand, Easy Life, based in the heart of Franciacorta, about 90km from Milan, is a holiday dream on a platter. Organic, irregular shapes, blue navy stripes, and beautifully illustrated fish define this porcelain set. [easylife.boutique](http://easylife.boutique)

## Pretty in Transcendent Pink

With the new normal slowly transitioning into our everyday normal, the past two years has redefined not only how we function, operate and live but also how we interact and interpret. So when Asian Paints announced the Colour of the year, - Transcendent Pink - as a part of ColourNext, a comprehensive forecast of trends in colours, materials, textures and finishes, it was little surprise that it underlined this philosophy. With a mature transitional quality, like our ever-expanding consciousness, this greyish tone represents a mind that has the ability to synthesise new knowledge and old wisdom, and harness both. In keeping with this mood, the Wallpaper of the Year—Lotus and Stilts—not only embraces transition but celebrates it. Like birds that adapt to the changing seasons or a resilient lotus that blooms in the most unlikely places. Using simple matchbox style art, the natural scenery of the Nal Sarovar Lake and its migratory birds, are translated into patterns of the wallpapers as a part of the Nilaya Nal Sarovar collection. [asianpaints.com](http://asianpaints.com)







FAB COLLAB

# Prickly Pop

A COOL POP ART AND INDUSTRIAL DESIGN COLLABORATION BETWEEN THE ANDY WARHOL FOUNDATION OF VISUAL ARTS AND GUFRAM HAS RESULTED IN NEW ITERATIONS OF THE CACTUS® TOTEM

Fans of pop art, rejoice! In view of the 50th anniversary of its debut, a limited edition series of Gufram's CACTUS® design will officially be launched at the Milan Design Week in June this year. What makes this series exciting is that it has been created in collaboration with The Andy Warhol Foundation for the Visual Arts, where the late artist's style and penchant for bright colours have been distilled into a new vision of the CACTUS® sculpture. Michael Dayton Hermann, Director of Licensing, Marketing and Sales at the The Andy Warhol Foundation for Visual Arts, Inc. says, "The Foundation is delighted to collaborate on this unique project which celebrates Warhol's continued influence on contemporary culture."

These stunning cacti have been sculpted in bright and vibrant shades of pink, yellow, and blue using the original 1972 mould from Gufram, an Italian interior design brand globally known for pushing the limits of



industrial design. The artisans painting the cacti have used Guflac®, the manufacturer's patented paint that makes the surface look like leather. The sculptures are available in three versions, namely, ANDY'S BLUE CACTUS®, ANDY'S PINK CACTUS® and ANDY'S YELLOW CACTUS®, and each colourway has received a 99-piece run.

"The collaboration between Gufram and Andy Warhol feels so right that it's almost absurd that it has never happened before! Finally, the pop art genius encountered CACTUS®, the most pop design icon," states Charley Vezza of Gufram. Commenting on how they went about making the sculpture, he says, "We started off imagining how Warhol would have depicted the CACTUS® and then we created the 3D version by working with a trio of typically Warhol colours and highlighting their tips with black, just as in one of the artist's screenprints." ♦ [warholfoundation.org](http://warholfoundation.org)

Clockwise, from top left: Gufram presents new limited editions of its iconic CACTUS® in collaboration with The Andy Warhol Foundation of Visual Arts; These sculptures have been made in three striking shades of blue, yellow and pink; Andy's Blue Cactus®





# Secret Address Book

CHAIRS AND COMPANY

After quitting the corporate life in 2014, Deena Rodrigues decided to follow her desire to design beautiful spaces with her own line of statement lighting, furniture, tableware, and eclectic décor with Chairs and Company. “We are driven by the vision of creating products seeded with memory and affection that one resonates with,” says Rodrigues. Along with their flagship store at Indiranagar, Bengaluru, the studio also retails online.

As a space of possibilities, a visit to their store is a unique experience like no other. Crafted by Indian artisans, where the old and the new blend harmoniously, you’re sure to find pieces with a modern design dialect -- several of which are influenced by the Art Deco movement and a lot of rattan and cane in a re-imagined avatar. Their collection of contemporary lights, stunning jewelled tabletops, Scandinavian-inspired tableware, hand-worked inlay consoles and bars is sure uplift any space. “The Lanka, Ranthambore, and Pushkar range are surely our hallmark products and



Clockwise, from top left: Kanso dinner plate; Swan inlay console; The Lanka console; Moderne black and gold cutlery

best-sellers,” she adds.

We are big fans of their graphic yet oriental Swan Inlay console table. “Originally inspired from a textile pattern, it is crafted with shell inlay on wood. The process is so intricate as each piece is hand-cut to shape and then inlaid over a bed of wood and resin,” says Deena. ♦ [chairsandcompany.in](http://chairsandcompany.in)



WORDS NITIKA CHORARIA PHOTO COURTESY CHAIRS & COMPANY





ART

# Watch Out For

LEAH KAPLAN STUDIO

**ARMED WITH THE PHILOSOPHY OF STAYING TRUE TO HERSELF AND HER MATERIALS, PHILADELPHIA-BASED CERAMIC ARTIST LEAH KAPLAN WORKS EXCLUSIVELY WITH PORCELAIN, WHILE EXPLORING THE UNDERSTATED BEAUTY AND ELEGANCE OF SCULPTURAL VESSELS**



**W**hen it comes to her art, Leah Kaplan is not short of inspiration. She draws from a wide and eclectic swathe of inspiration - from artisans in remote parts of the globe to basketry that includes wabi-sabi forms and textiles comprising Ikats, Japanese Boros, and Shibori. Her journey as a ceramic artist started when she enrolled in her first ceramics class at age 22. However, it took another 30 years before she was ready and able to set up her own studio.

Effortlessly crafting one-of-a-kind intricately detailed objects of art, she explores porcelain's alluring translucent properties, while experimenting with its soothing and stunning textural potential, creating layered, multi-dimensional pieces. The result leads to a light and shadow play. "One discovery led to another - I fell in love with porcelain's whiteness and smoothness. It's a pleasing, tactile experience to dig your fingers into it and be in conversation

with the material," she says.

Experimenting with movement and a range of hand-building methods, she uses different variations of slab, coil and pinching techniques that are gradual and meditative as opposed to work that is created in quicker bursts of intensity. "The challenge of drawing viewers closer, pulling their eyes inward and downward into the cavities of my work is like sharing a secret," says Leah.

Each way of working has its own particular rhythm and feel, which alters how she experiences and interacts with an object. "The simpler the process, the more I cotton to it. The aim is to arrive at something that feels right. Some vessels take days to complete. These pieces evolve slowly, through accrual. Others take just a few hours," she says. It's this iterative process - driven by intent and intuition - from which Kaplan's magical work emerges. ♦

Instagram: @leahkaplanstudio



**Clockwise, from top left:** Crewel Omicron and Ribbon Orion from her unique collection; Leah Kaplan with her one-of-a-kind Ribbon Vessel; Details of the stunning Lurid Oolong piece



SPACES

# Decadent Design

DISCOVER A WORLD OF OPULENCE AT  
THE WORLD OF VALAYA

Celebrating a new chapter of luxury in India weaved together with larger-than-life experiences, JJ Valaya unveils his sumptuous flagship store, The World of Valaya, housed at JW Marriott, Aerocity, New Delhi. Designed by Valaya Home, this grand 12,000 sq-ft, two-storey concept space showcases fashion, jewellery, interiors, and photography. With its refreshing charm, this multidisciplinary capacious store remains rooted in quintessential Valaya sensibilities and is infused with intricate details.

As you walk down the Art Deco-inspired staircase into the lower level, you will find yourself standing in the resplendent Jamawar Gallery, below a chandelier that is a pièce de résistance in its own right. With walls fabricated using antique jamawar shawls and an Art Deco inlay flooring, this breathtaking space is a visual treat. This area further leads to the central artery of the store through a monochrome passage with a signature chevron ceiling, beautifully illuminated by a series of pendant lights.

To the right is an eye-catching black arched entrance with signature Valaya wall tapestries, which brings you to the Altar Lobby of the Home section. Here, you can meander through seamlessly interconnected zones -- the living room, bar with its dedicated lounge, the dining room, and the bedroom. "The whole concept of having a Valaya home experience as part of the World of Valaya is to showcase the look and feel of what our sensibilities can create in spaces. We are here to introduce to the world a Valaya lifestyle with our own unique language of sophisticated grandeur," says JJ Valaya.

Brilliantly reflecting the synergy of modern, maximal, and multicultural elements, every product is designed, developed, or curated by the master couturier himself. Marked by a cohesive design language, Valaya Home is where the brand's core ethos comes alive: that of the royal nomad with a penchant for Art Deco. It features lighting solutions, fine furniture, lush carpets, and art. You can additionally discover hand-picked rare vintage finds sourced from the Far East, Turkey, the Orient and the interiors of India, as well as the complete oeuvre of the designer's art photography. ♦

[valaya.com/lifestyle](http://valaya.com/lifestyle)



From top, The home section is soaked in luxury with bespoke pieces from the Valaya furniture line, lush carpets and fine art. In addition, rare vintage finds handpicked by the JJ Valaya himself, sourced from the Far East, Turkey, the Orient, and the interiors of India are on display as cue on what to expect from Valaya Home; The grand passage in black and white with a signature chevron ceiling illuminated by a series of pendant lights (FACING PAGE) Curated like an eclectic princely chamber, a mix of vintage prints framed on the wall make for a striking backdrop against the black console table dressed with antiques and photo-frames while a grand chandelier holds attention



# Popsicle Pairings

From coral to scarlet and all the blushes in between, with bursts of fresh mint and tropical touches, too, the interiors forecast is looking bright

PHOTOGRAPHY Simon Bevan

STYLING Jennifer Haslam



ASSISTANTS AREESHA RICHARDS AND CELIA CAMPBELL



The Many Faces of Red rug by Josef Albers, Christopher Farr. Strom small pink vase, Aria. Abstract candlestick, Graham and Green. Check cushion, In Casa by Paboy at Selfridges

(Facing Page)

## COOL CURVES

The sculptural chairs add a retro feel while the pale pink makes them thoroughly modern and fresh.

Lilas armchairs in Pleasure Rose Powder fabric, Dainelli Studio for Gallotti & Radice. Drapes in Valloire Pale Jade, Designers Guild. Tempo side table, Zanotta at Aram Store.

## STRONG SHAPES

Striking silhouettes add definition and depth.

Ingo Maurer Hexagonal cork lamp, Béton Brut. Lilla vase, Heal's. Tubini vase, Calligaris. Medium Pompidou vase, Jonathan Adler. Vaarnii footed bowl, Twentytwentyone. Linara Tomato fabric, Romo. Wall in Kyoto Blossom perfect matt emulsion, Designers Guild

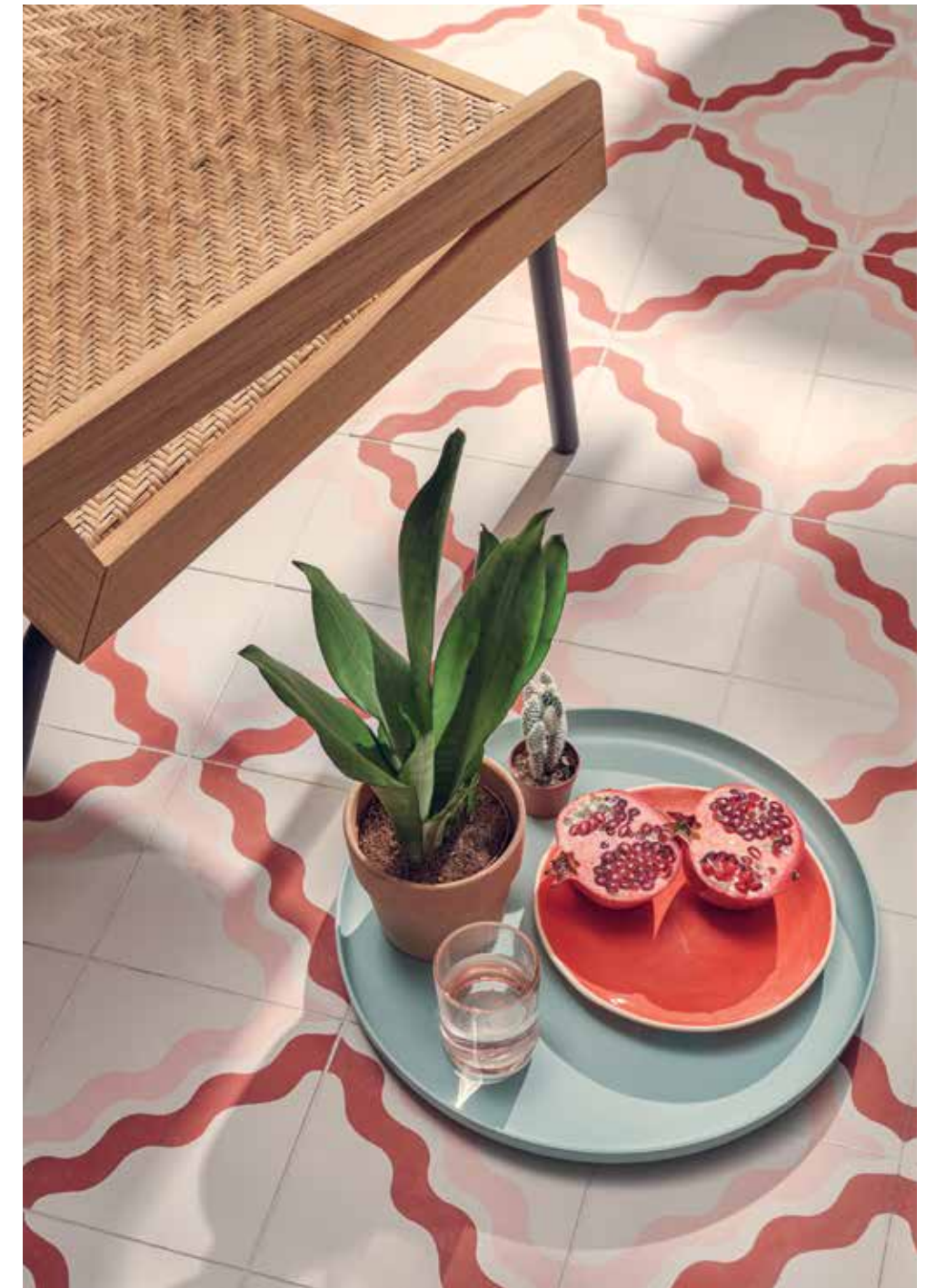




### CRAFT WORK

Artisanal wood pieces bring earthiness to the pastels.

Wall in Madder Red matt emulsion, Fired Earth. Neowall sofa, Piero Lissoni for Living Divani at Silvera. Skyline coffee table, Cattelan Italia at Chaplins. Shift rug, Diane Bresson for Floor Story. Latjesstoel armchair, Béton Brut. Dama walnut table, Poliform. Osaka floor lamp, Heal's. Drapes in Valloire Pale Jade, and Ventoux Blossom, Baluchi Cameo round cushion, all Designers Guild. Rectangular cushion in Linara Rhubarb fabric, Romo. Jug, Designers Guild. Djura vase in Pink, The Conran Shop. Moustache large Canova ceramic tray, Liberty. Alter mirror, Vaarnii at Twentytwentyone



### RIPPLE EFFECT

The wavy lined tiles in brick red and fondant pink add interest and are certain to bring joy to any hallway, bathroom or kitchen floor.

Ric Rac Bubblegum Two Tile tiles, Samantha Todhunter at Bert & May. Chair, Ethimo. Vitra tray, Twentytwentyone. Plate, glass, The Conran Shop





flooring, The Colour Flooring Company. Terra pendant light, HK Living at Folk Interiors. Glasses, The Conran Shop. Place mat, for four, Liberty. Feast plate, Aria. Jug, CasaCarta at Amara. Tablecloth in Ventoux Blossom, Designers Guild. Wooden footed tray, Vaarnii at Twentytwentyone. Plates and bowls, from The Conran Shop

#### HOT SPOT

**Sultry shades in the bedroom set the scene. Crisp whites help to keep things fresh and warm woods introduce a natural edge.**

Le Marais bed frame in White Zinc leather and polished brass, Calligaris. Nikari ash divider, Twentytwentyone. Leaf side table, Porada. Gaia hanging light, Ethimo. Super soft sateen duvet cover, pillowcases, both in Raspberry Sorbet, Secret Linen Store. Rose Pink silk pillowcases, flat sheet (used as throw), Gingerlily. Cushion, In Casa by Paboy at Selfridges. Bretherton stool in walnut, The Conran Shop. Vitra trays, Twentytwentyone. Rug, round vase, both Heal's

#### COLOUR COMBO

**Serve the fresh mint green on the lower-half of the wall for a crisp hit of colour.**

Pennon ash dining table, L.Ercolani. Carimate chair, Aram Store. Axel Enthoven dining chairs, Béton Brut. Wall in Verdigris and Flame Red, both perfect matt emulsion, Designers Guild. Pistachio vinyl





Yellow plate from Nestasia, nestasia.in

Aarya ceramic jar-set of 2 from Fabindia, fabindia.com



# Cool Off

GIVE YOUR SPACE A SUMMERY UPDATE WITH THESE DELICIOUS, GELATO-INSPIRED PICKS



Blush vase from Ikai Asai, ikaiasai.com

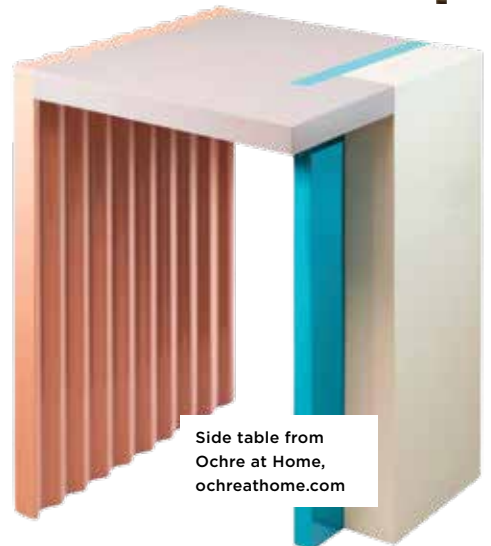


Montreal sofa collection from Gulmohar Lane, gulmoharlane.com



Mid-century swivel office chair from West Elm, westelm.in

50s Retro Line 2-slice toaster from Smeg, smeg.com



Side table from Ochre at Home, ochreathome.com





Rain Dnc Indigo wallpaper from Asian Paints, [asianpaints.com](http://asianpaints.com)

# Ahoy!

GO NAUTICAL-CHIC AND CHANNEL THE SURF VIBE WITH THESE BLUE AND WHITE STRIPED SELECTIONS



Nautical stripes cushion cover from The Yellow Dwelling, [theyellowdwelling.com](http://theyellowdwelling.com)



Cotton tea towel set from Nestasia, [nestasia.in](http://nestasia.in)



Greece nautica stripes cushion cover from The Purple Turtles, [thepurpleturtles.com](http://thepurpleturtles.com)



Klippan 2-seater sofa from Ikea, [ikea.com](http://ikea.com)

Blue and white stripes hand-loom wool rug from Ikka dukka, [ikkadukka.com](http://ikkadukka.com)



# Design Journey with

Ritu Nanda

With a breezy aesthetic and a disposition to match, Ritu takes us around her island-chic world that is elegant yet eclectic at the same time



An aesthetic that is a perfect balance of curated and cozy, Ritu Nanda's work is breezy, tropical and thoughtful. It was a hot, humid morning in Goa, when I first walked into a home she had just finished prepping and propping. It was understated yet luxurious with a distinct European feel but it sure doffed a hat to its Indian roots. With stucco white walls, weathered wooden doors, stone flooring, French windows; there was a lovely breeze blowing thanks to the cross ventilation, and lush vegetation cocooning the villa, it was designed for tropical weather. "I think styles and palettes need to have context, cultural and geographic. You will find it in Geoffrey Bawa's work. He was so respectful of both the place and the people he creating was for. I think having met him in my formative years helped me evolve into the designer I eventually became," says Ritu.

The play of light and shadows, the dance of colour and textures, the seamless integration of spaces and building with furniture and textiles for long piqued more than a passing interest. Ritu nurtured this passion and backed it up with a stint at the Academy of Art College in San Francisco where she studied art and photography. She then went on to become one of the most sought after photographers of the time, dedicated to her craft

WORDS PRAGNYA RAO PHOTO BHARATH RAMAMRUTHAM

for over 11 years. It was around this time, she felt the need to apply herself, and her skill on to a larger canvas. And thus came into being the hugely successful lifestyle store, Camelot. It was a one-of-a-kind boutique store in Goa that brought together eclectic and creative names from the fashion and design world under one roof. From there, it made its way to Kochi, Maldives and Brussels. "It gave me an opportunity

to think of design in all its forms and dimensions. It was because of Camelot, its decor and merchandise that I began to get interior design work from the Taj Hotels. That was the beginning of my work as a design firm," explains Ritu.

Currently working on varied projects across Goa, Mumbai, Ahmedabad, Goa and Leh, Ritu says, "I think I have very consciously stuck to a simple formula as a designer. I need to

From top, The beige and white, earthy neutral palette is signature Ritu Nanda that evokes the island chic vibe; The living area in Parra 180, a luxury property designed by Ritu is finished in shades of beige with art and upholstery that adds pops of colour (OPPOSITE PAGE) Designer, Ritu Nanda





From top, The living room in Cosmos 108, a luxury villa designed and outfitted by Ritu exudes an old world charm with its pairing of vintage furniture with shades of dusty blue; The standalone villas are a vision in white with wooden columns and cobbled driveways

be honest and sincere to my own sensibility and aesthetic. While constantly learning new things, I do not attempt to do what I don't relate to." Her approach to any project is also pretty straightforward. Respond to the space first - whether it's a large piece of land or a small apartment. "I like to understand the direction of light, the levels, volume, openings, views and the impact that our design will have. I think of myself as a 'designer of all things.' I like to have a clear vision for every aspect of a space: exteriors, interiors; materials, colours, furniture, textiles, lighting, landscape, art, objects—literally from the roof down to every last teaspoon," exclaims Ritu.

While she is very hands-on and involved in every aspect of the design and execution, she's also proud of her team that has helped her achieve this. Ritu lived in Mumbai and shuttled between her studios in the city and in Goa. But that was until the pandemic hit. "I think the past two years have affected everyone in one way or the other. It triggered a new consciousness in people, from a shift in lifestyle to an awareness of what is truly important. I for one, made the decision to make Goa my home. This, after over 15 years in Mumbai. I think one should surround oneself with things they love," says Ritu. Perhaps what prompted her move too. Her unequivocal love and passion for the kind of work she wants to continue to do, and spend her free time, "by the beach, with family, good food and friends." ♦ [ritunandadesign.com](http://ritunandadesign.com)



NAME TO KNOW

# Alex Proba

Take a joyride into the whimsical and joyful world of this Portland and Brooklyn-based designer, where candy shapes and delicious colours are par for the course



PHOTOGRAPH JULES DAVIES

Clockwise, from top, As a part of Louis Vuitton's 200 years celebration Alex was invited to reimagine the iconic trunk, and her playful yet distinct use of colour and shape made it a stand-out visualisation; Vibrant totemlike sculptures and spirited seating elements greet visitors at the entrance of Design Miami; Alex Proba



After having studied spatial design in Germany, she went on to study contextual design (furniture and product) at the Design Academy Eindhoven. In 2011, Alex moved to New York, where she worked as art director at Kickstarter and as design director at Mother New York. Alongside a permanent position as art director at NIKE, her portfolio includes brand work for Mociun, as well as Harry's and Google among many others. She went on to start her own practice with Studio Proba in 2013. However, it was only a couple of years later when she worked on her first mural project, a 60-foot long piece for Dropbox's headquarters in New York, that she hit the proverbial gold in the design world.

**Tell us a little about your background.**

I come from a family of doctors. When I was about 16 years old, I studied as an exchange student in Ohio where I learned to appreciate art and craft. I started drawing, painting and experimenting with materials and objects. I felt something special when I was creating. My parents thought my newfound creativity was a hobby but it was more than that for me. When it was time to decide on a career, I initially chose the expected route to become a doctor. Very quickly I realised that medicine wasn't the path I truly wanted to take



From top, Tomorrow Land, a series of vibrant sculptures make their presence beyond the Miami Design District where the installation also served as the basis for an interactive and virtual game; The Vacation rug, designed in Brooklyn, handmade in India, it is hand-tufted, hand-dyed and made from 100% TEX New Zealand wool yarn and bamboo silk

WORDS PRAGNYA RAO PHOTOGRAPHS COURTESY ALEX PROBA

and so I took my chances and followed my heart by applying to the design school in Hamburg, Germany. And then it all came together from there, by far one the best decision I've made.

**Your work is cheerful, fun and almost a dream in colour - what are your inspirations for it? Is there a design process that you follow?**

I am first and foremost a visual designer and an artist, and all my creations are meant to evoke an emotion. My work is a celebration of colour and pattern, which I would see as a positive stimulation of the senses. That said, I do try to not be inspired by other visuals than what the everyday gives us. It can be sounds, smells as well as memories. There is no process that I use; I am a maker at heart, and when I create I'm extremely happy. I try to create every single day, even if it's only sketches of my ideas, at least it's something. Sometimes there are moments where I use my creativity as personal therapy, sometimes when I am stuck with a project or an assignment I try to switch gears and create something off topic for a little while. A process would break me.

**What challenges do you face as an artist and designer?**

Quite honestly, social media is a blessing and a curse. It is a wonderful platform to get your work out but that it can also stab you in the back as it is out there in the world for other people to do "whatever they like" with it and I feel like this takes the creativity away.

**Who did you grow up idolising?**

My grandmother. Sometimes all I need is a phone call with my grandmother to get my creative flow going.

**How would you describe your design and your personal style as well?**

I would say that when people see it they can tell I am having fun. My work is expressive, colourful, sometimes bold and geometric, and at other, organic and playful. I want people to feel something when they interact with my work—and I want them to feel something good, not bad. With my personal style, I try to do the same and mix colour with simple neutrals. ♦ [studioproba.com](http://studioproba.com)



# Partners in Practice

Huzefa Rangwala and Jasem Pirani

MUSELAB

The talented Mumbai-based duo throw open their studio and their creative world to us, one thoughtful detail at a time



It wasn't many moons ago when I had walked into what is now their old studio. I was amazed how they had put into use every square inch available. And who can forget the perforated facade? Obviously the duo are talented and thoughtful designers but they also have such a warm and sunny side to them that puts you at ease each time. Now having walked into what is their pandemic baby - a plush new studio, full of natural light and joyful details - right from the impressive entry, to the hidden hooks for keys, the MuseLAB DNA chandelier, the overhang above the desks, to the neon signs on the ceiling, and of course the stream of natural light, and lots of art that holds a special place in their hearts - the space is signature MuseLab - whimsical yet restrained.

## START OF THE JOURNEY

The duo met in 2005 when they were both studying abroad. "Jasem was in Savannah, I was in Atlanta, and had some friends who were studying Savannah college of Art and Design," says Huzefa. After graduation, he went to Savannah, where he met Jasem. "We connected almost immediately, and we have been best of friends since," he says. Keen on working together, they were sure of experimenting in the fashion space. However, like with most best laid plans, life did have something else in store for them. Cut to 2010, when they both returned to India, Jasem began working with Pinakin Patel while Huzefa went on to work with Hafeez Contractor. In a year from then, just fresh from a holiday to Sri Lanka, "we came back completely broke and started MuseLAB," says Huzefa. Like with most new set-ups, it wasn't smooth sailing. Having working on over 20 pitches, which didn't fructify, they finally bagged a residential project, a two bedroom apartment, which was also almost entirely done with just finishing touches to go. "The first two years were rough, we worked out of Jasem's father's conference room," he says.

## NEW BEGINNINGS

They eventually moved out with a team of 8 to a studio. "The first 10 years I think we were known as quirky studio. In the last

WORDS PRAGNYA RAO PHOTOGRAPHS COURTESY MUSELAB



Clockwise, from top left, Huzefa Rangwala and Jasem Pirani, Founders, MuseLAB seated on the Medallion, a polished steam beech, teak wood and metal seat; The design of this home in Alibaug is akin to a jewel box, a modern design juxtaposed with ornamentation; The living room in the minimal, Scandinavian inspired home comprises of an eclectic mix of furniture, a sofa from IKEA, armchairs from Phantom Hands and a metal profile chaise lounge and Bloom, a wooden coffee table designed by the duo (FACING PAGE) The view of their new studio from the mezzanine level offers a view of the stunning spiral staircase and the discussion plus conference area of the studio

2-3 years, we have made that kind of a shift from quirky to whimsical, there's more maturity, you grow with experience," explains Jasem. Today, the studio comprises of a team of 18 housed in a space that is more aligned to where the practice is today, both in terms of philosophy and professionally. "We have always been a peoples' practice. We are mentoring everyone that is here with us and in the process we are learning from them," elaborates Huzefa.

## DESIGN PHILOSOPHY

"Our signature style is more in the gestures and the details," reveals Jasem. "I think we also are looking at ways of putting a smile on the face of the user when they use the space, by means of discovering thoughtful yet playful details," adds Huzefa. MuseLAB originated from the philosophy that an idea comes into being and takes shape from an inspiration, a muse, and they wanted their studio to be their creative and experimental playground. "As a practice we don't want to be limited. We don't have a design language but we have principles that we stick to and a process we adhere to. We love to explore and experiment with different 'isms' in architecture," he says.

With a diverse range of projects, ranging across accessories, furniture, products, interiors, architecture, landscape and masterplans, it sure feels like the only way is to march forward. "We just got here, we are trying to absorb that. We don't yet have that 5 year goal, but we do want to do projects that push us to think harder and also allow us to give back to the community," signs off Jasem. ♦ [muselab.in](http://muselab.in)



# Decorating

PHOTOGRAPH COURTESY NEST. IN THE PICTURE, A RUSTIC STONE FINISHED COUNTER IS COMPLEMENTED WITH THE FERM LIVING POND MIRROR, WHICH IS INSPIRED BY FREE-FLOWING MOVEMENTS OF WATER. [nest.co.uk](http://nest.co.uk)



We have often said that the bathrooms are our private sanctuaries. Whether it's uber luxurious, crazy colourful, or calm and serene, one thing's for sure, it has to have oodles of personality. Browse through our decoration pages for tips on easy makeovers for small bathrooms, inspiration on styles, ideas to get the trendiest looks, and some of the coolest product innovations



# inspiration gallery... small bathrooms

compact SPACES CAN STILL pack a punch –  
proving that BIJOU is beautiful



## Wonder wall

'If there is one room that needs a little luxury, it's your bathroom,' says Louise Ashdown, head of design at West One Bathrooms. 'Our innovative Wall&Decò waterproof wallpaper is designed for application directly in the shower. It's available in hundreds of different patterns and colourways and can even be used on the ceiling.'

**GET THE LOOK** Wall&Decò Wet System Imaginary Paradise, West One Bathrooms



## Monochrome magic

A striking small wet room can be created by sticking to a monochrome palette and mixing patterns. This curved space plays with height by creating a border of charcoal grey tiles at the bottom of the shower area and a pretty black and white carpet of floral tiles on the floor.

**GET THE LOOK** Oblique Sand and Dark Grey wall tiles and Casablanca Mono Decor 10/12 hexagon porcelain floor tiles, all available at Mandarin Stone

WORDS ROHINI WAHI



## Bright spot

'Wall-hung basins are both a stylish and practical solution when space is limited,' says Amy Bartlett, product design manager at Kast Concrete Basins. 'This basin's compact dimensions help to optimise space while the minimal form and concrete texture create a strong statement. Pair with a brightly coloured tap for a playful touch to help lift the space.'

**GET THE LOOK** Fox wall-hung basin, Kast Concrete Basins





### Mellow yellow

Retro patterns and vintage hues are all the rage and a little trend driven playfulness can really pack a punch in a sliver of space. This sweet and small corner shower by Studio Robert McKinley is adorned in sunshine yellow chequered tiles from Heath Ceramics in LA and teamed with vintage fixtures in high-shine brass hardware bringing the space up to date.

**GET THE LOOK** For similar tiles in the UK, try Milagros handmade wall tiles in Primrose Yellow



### Maximalist splashback

This cheery small bathroom in Notting Hill by Yellow London uses tiles in multicoloured pastels around the bath informing the palette of the accessories in the rest of the space. 'With small spaces it's easier to create a maximalist look as there is less space to fill,' says Yellow London designer Cath Beckett. 'There is always something to look at and it detracts from the size of the room, and takes your attention to colours, patterns or contents of the area, which creates an encompassing feel.'

**GET THE LOOK** Rainbow Stripes encaustic cement tiles, Otto Tiles



### Rich mix

Classic tile patterns will always stand the test of time, but it's fun to see them brought up to date keeping longevity in mind. This bathroom at The Siren Hotel in Detroit features a vintage-inspired checkerboard tile. Slightly flecked, it has the feel of terrazzo flooring. Coupled with a bright blue terrazzo sink and red gloss bathroom doors it is a riotous but restrained mix which would liven up a tiny room.

**GET THE LOOK** This bathroom in The Siren Hotel was designed by Ash NYC. Try Tikamoon for a terrazzo sink



**Old Hollywood glamour**

'When creating this space, interior designer Steven Gambrel wanted to recreate the glamorous look and feel of the hotel lobbies typical of mid-20th-century London,' explains James Lentaigne, creative director at Drummonds. 'There is a strong focus on materials, colour and texture; the walls are adorned with swirling Verde Luana and Verde St Denis green marble, bringing a sense of opulence and grandeur to the space.'

**GET THE LOOK** Floor-standing Chesleton shower in antique brass and brass fittings, Drummonds



PHOTOGRAPH SIMON UPTON



PHOTOGRAPH (LAYERED LOOK) HELEN CATHCART

**Layered look**

'I love creating nooks out of wasted space which can then be used for books, decorative pieces or flowers,' says designer Octavia Dickinson. 'I like to defunctionalise a bathroom to give it a softer feel with less harsh edges; ways to do this include introducing fabrics where possible with wallpaper and hanging antique mirrors, pictures and china on the walls.'

**GET THE LOOK** This bathroom at The Bear Inn in Shropshire features Seraphic Star Liberty wallpaper from Soane. Panelling in Little Greene Puck gloss. Danube Arcadian tiles from The Winchester Tile Company and a wall light from Hector Finch



**African adventure**

'I loved every aspect of working on this bathroom for C.P. Hart. It was important for me to incorporate colour, texture and pattern into the design, but at the same time to create a relaxing and restorative atmosphere,' says designer Eva Sonaïke. 'The pattern of the Odi wallpaper gives the room a luxury African feel which, with the combination of the modern Delfo range, creates a perfect harmony.'

**GET THE LOOK** Luminous tiles in Lume Green; Delfo vanity units and SpilloTech G taps in brushed gold, all C.P. Hart. Odi wallpaper in Purple, from Eva Sonaïke's Eko Eclipse collection



### Rich and glossy

Don't be tentative about using dark colours in a small space. This bathroom's shower uses floor-to-ceiling chocolate brown tiles with a grey slate tray and minimal glass door, giving the whole space a modern rustic look. Keep the tiles high-gloss to reflect maximum light and create a sense of space. 'We wanted a feeling of comfort in the bathrooms and the shower,' says designer James Thurstan Waterworth. 'So we used burgundy coloured tiles as the darker colours to create a lovely warm environment in a space that is relatively small.'

**GET THE LOOK** This bathroom at The Bradley Hare was designed by James Thurstan Waterworth. For similar tiles try Emerie & Cie



### Soft play

'I love to use curtains in a bathroom because they feel unexpected. They can be a really great way to bring some softness into a room that often is filled with hard finishes,' says Seattle-based interior designer Heidi Caillier. Keep them short in a compact space.

**GET THE LOOK** This bathroom was designed by Heidi Caillier. For similar fabric try Dune in Sepia by Casamance



# Colour insight: bathroom looks

The trending palettes and paint techniques that will raise your wash space game

FEATURE ROHINI WAHI PHOTOGRAPHS (CROWN PAINTS), JON DAY PHOTOGRAPHY, (PAINT & PAPER LIBRARY) PAUL RAESIDE, CLAYBROOK STUDIO (BEN CARPENTER)



The plaster look adds texture and soft, earthy colour to a room

A new colour scheme can - transform the look of your bathroom - whether you dream of a soothing retreat with spa-like hues or a vintage roll-top bath teamed with a daring palette. Here, the experts offer advice on how to elevate your space with paint.

## Sanctuary hues

'While bathrooms can be a hum of activity in the morning, they can also be a space of calm and relaxation at the end of a long day,' says Patrick O'Donnell, Farrow & Ball's brand ambassador. 'With this in mind, consider gentle colours for 2022, such as School House White on your walls. Add in an element of contrast with a pop of colour to your vanity unit - something like Breakfast Room Green,' he suggests.

## Go dark and darker

'Don't be afraid of the dark. Dark colours can create relaxing sanctuaries, and the trick to painting with them is to pair them with smaller accents of even darker colours to add contrast and rich depth,' says Rob Abrahams, co-founder, Coat Paints. 'Consider a bathtub dressed in The Record Store - a true black - against a deep green Ditch The Tie panelled wall for an on-trend statement bathroom.'

## Colourblock with confidence

'Colourblocking is a simple, contemporary way to introduce pairings such as pink and blue to a small space such as a bathroom, without it being overwhelming,' says Ruth Mottershead, creative director at Little Greene. 'Consider experimenting with the proportions by painting the ceiling in a bolder shade, such as Deep Space Blue.'

## Pair wine hues and burnished brassware

'Deep wine shades are set to be huge this year - team it in bathrooms with burnished brassware for added character and patina,' advises Rob Whitaker, creative director at Claybrook. 'Pale glazed tiles combined with a stronger paint colour creates a complementary effect but one with aesthetic balance, alongside a little design drama to enjoy.'

## Contrast trims

'There is no need to limit yourself to just one paint shade,' says James Greenwood, Graham & Brown's brand and interiors expert. 'Why not create contrast by painting the door and skirting boards a complementary shade? We love combining the delicate Penelope pink with our favourite emerald green - Adeline.'

## Geometric treatments

'Get creative and try a mural of geometric shapes, including arcs and circles, that goes up onto the ceiling,' suggests Dulux's creative director Marianne Shillingford. 'Small, hard-working spaces deserve a bit more attention and because of their size, even an ambitious project won't take ages to achieve. Check out the Dulux YouTube videos on how to paint different shapes.'





# Buyer's Guide

## SOAK IN STYLE

Whether you want to create a chic, tranquil bath or a statement-making one, elevate your bathroom to mirror your aesthetic with these easy tips

PHOTOGRAPH CIELO CERAMICA. IN THE PICTURE, ELLE, THE ULTRA LIGHT SUSPENDED WASHBASIN, ELEGANT AND CHAMELEONIC DESIGNED BY ANDREA PARISIO AND GIUSEPPE PEZZANO. [ceramicacielo.it](http://ceramicacielo.it)



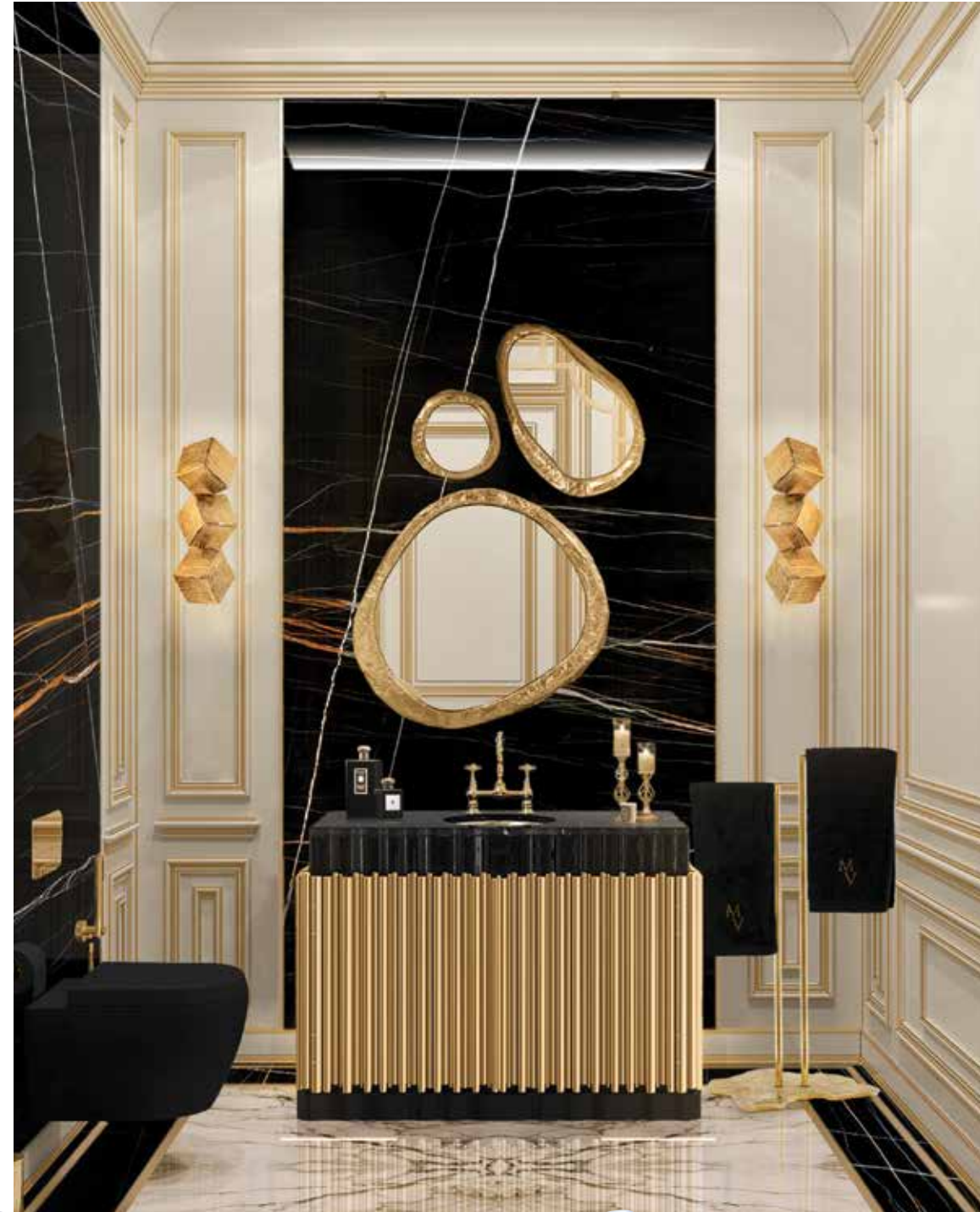


# GO GLAM

Easily one of the most stylish looks, it is the celebrity-equivalent when it comes to bathroom looks. It is shiny, borderline OTT and definitely knows how to make a statement. Whether it's a bijou bathroom or a lavish sized one, this looks fits in with every size. Think of it as getting dressed to go to a party, that all-black outfit with chic gold accessories. You can create a black shell with marble, tiles or even wallpaper and accentuate it with gilded fittings and accessories. Remember to add that one accent piece, if your space allows for it - then opt for an ornate, luxe bath tub or even a mini chandelier. Don't hold back, this is where you can go all out.

**TIPS FOR A GLAMOROUS BATHROOM:**

- Glossy finishes rule the roost. Not only do they add a sheen, the mirrored effect can create a dramatic space.
- Opt for statement pieces - whether it's custom vanity in fluted gold panelling or a sculptural bath tub or mirrors with gilded frames, go big and bold.
- Lighting is key. Opt for warm, soft lighting to accentuate the gold trimmings.
- Pair large marble slabs with mosaic patterns or geometric details. Metallic finished tiles can be used as wall dado.



PHOTOGRAPH COURTESY MAISON VALENTINA

Indigo taps from antoniolupi, antoniolupi.it



Citterio, single lever basin mixer from AXOR, axor-design.com



Hues faucet by Hindware Italian Collection, hindwarehomes.com



Topaz collection three-hole washbasin mixer from Graff, graff-designs.com



Olivia Collection, floor mounted bath tap on risers with shower set by Centro Ricerca Fima for Fima-Carlo Frattini, fimacf.in



Happy D.2 wall-mounted toilet from Duravit, duravit.in

Anthem showering system from Kohler, kohler.co.in

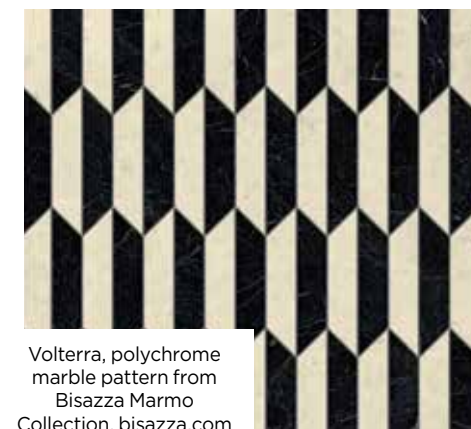


Newton bathtub from Maison Valentina, maisonvalentina.net



“From size to style, the very concept of bathroom has changed drastically. Interestingly, it is now being seen as a relaxing area where people would like to spend more time. We are noticing a major shift in and products that are water efficient and sustainable are sought after. Marble flooring, gold and rose gold fittings that make the bathrooms look more luxurious and eye-catching are also in demand.”

**SUDHANSHU POKHRIYAL**, CEO, BATH & TILES BUSINESS, BRILLOCA LIMITED



Volterra, polychrome marble pattern from Bisazza Marmo Collection, bisazza.com



Maxima Bathtub from Sicis, available at Tessera India, sicis.com





PHOTOGRAPH NEST

F series  
Rainshower  
from GROHE,  
grohe.co.in



# WHITE BLISS

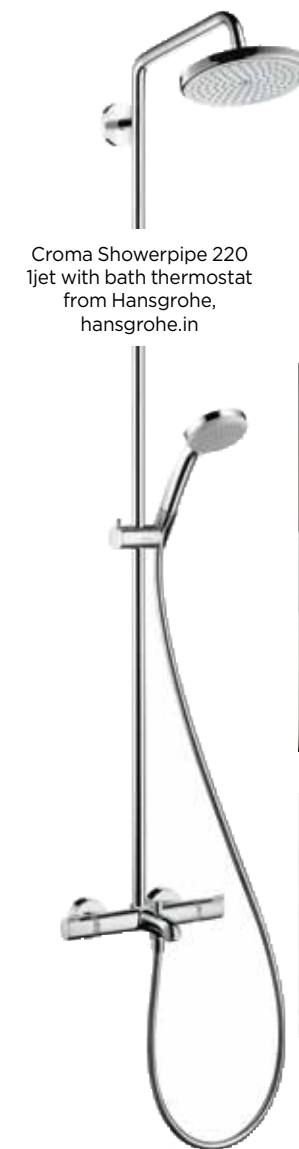
You can't go wrong with a minimal-modern white hued bathroom. Derived from uber urban sensibilities, this look is perfect for those who can't get enough of sleek lines. A mostly white colour palette creates a bright and expansive effect, so embrace the crisp, refined simplicity of white. You can start with choosing just the right tone of white that suits you, then put together finishes and materials in a range of textures matching this shade. Don't hesitate to combine the white material palette with geometric fixtures and accessories. This look ticks all the 4 Cs- clean, contemporary, calming and chic!

## TIPS FOR A MODERN WHITE BATHROOM:

- Cooler hues of white create a more modern appeal, so be sure to find that perfect shade of white for your bathroom.
- Seek out chic chromatic accessories and fixtures, in clean geometric shapes. These linear lines add an edgy urban vibe to this minimal theme.
- Go for white lighting in cooler tones to amplify the contemporary ambience.
- A whole host of wall cladding options like marble, subway tiles, mosaic and ceramic, work well for this monochrome look.
- Refresh and reset your senses in this space, so be sure to continue the white story with matching bath linen too.



Pavit Grey tile  
from Kajaria,  
kajariaceramics.  
com



Croma Showerpipe 220  
1jet with bath thermostat  
from Hansgrohe,  
hansgrohe.in

NEOREST NX I  
Smart Toilet  
from Toto  
Toilets, toto.com



3-holes basin tap,  
SO collection by  
Davide Vercelli for  
Fima Carlo  
Frattini, fimacf.in



Origin basin  
mixer tap from  
Vitra,  
vitra-india.com



Bianco,  
marble effect  
tiles from  
Johnson Tiles,  
johnson-tiles.  
com



Inspiration Collection washbasin  
from Roca, roca.in





PHOTO BY BENOÎT LINERO FOR LES DEUX GARES



# ECLECTIC OASIS

Have fun with colour, as you create a unique bathroom that's quirky and inspired by retro sensibilities. If you're into cheerful spaces that have character, then this is the bathroom style for you. Eye-catching and dramatic, this look is sure to be a conversation starter with guests. Let your individuality shine through in your choices, because this is a look that's all about making a signature statement.

### TIPS FOR AN ECLECTIC BATHROOM:

1. Statement tiles are a definitive go-to option for this look. Bright tones like sunflower yellow, avocado green, peachy orange and cotton candy pink are a few examples of hues that work well.
2. Pack in personality by opting for a bold colour palette that you love. This could mean styling the whole space in one bright tone or contrasting two different hues or even interspersing statement pieces' in your favourite colour.
3. Playful patterns can be your best friend. These can range from interesting shaped ceramic ware, patterned tiles, quirky shaped fixtures or wallpaper with fun prints. There's a whole lot of room to improvise and go as maximal as you like with pattern pairings.
4. The key to crack this look is to combine retro colour sensibilities with interesting shapes.



Plain Mango Yellow ceramic tile by Orient Bell, orientbell.com

Callipyge Peach wall hung ceramic toilet from Trone, trone.paris



Wall hung wash basin from Viadurini, viadurini.it



Monoblock basin in Matt Terra Rossa, from Plural Collection by Vitra, vitra-india.com



Runskär wash-basin mixer tap from Ikea, ikea.com

Bio Shock faucets by Renzo Colli from Fima Carlo Frattini, fimacf.in



“Coloured bathroom faucets and fittings are taking over in 2022. A coloured faucet will instantly uplift your bathroom decor and add personality to it. The newly launched ‘GROHE Colours’ faucets and showers along with Grandera, Eurocube, Lineare, and Essence - the colour ranges of GROHE’s are becoming very popular.”

**BOBBY JOSEPH**, LEADER, LWT INDIA & SUBCON



DECORATING

Fox compact basin, with side vanity area from Kast Concrete Basins, [kastconcretebasins.com](http://kastconcretebasins.com)



Arco multi-functional integrated bathroom furniture by MUT for Ex.t, [ex-t.com](http://ex-t.com)



Elm Mini basin from Kast Concrete Basins, [kastconcretebasins.com](http://kastconcretebasins.com)



Frieze One Low Checked basin by Marcante-Testa for Ex.t, [ex-t.com](http://ex-t.com)

# BOWL 'EM OVER

We scouted the world over to bring together a mix of decidedly delish and summery cool wash basins



Elle Ovale Canapa oval single wall-mounted ceramic washbasin by Andrea Parisio & Giuseppe Pezzano from Ceramica Cielo, [ceramicacielo.it](http://ceramicacielo.it)



Elegance Soft by Officina Azzurra for Azzurra Ceramica, [azzurraceramica.it](http://azzurraceramica.it)

Nouveau washbasin by Paola Vella and Ellen Bernhardt for Ex-t, [ex-t.com](http://ex-t.com)



Otto circular countertop basin from Kast Concrete Basins, [kastconcretebasins.com](http://kastconcretebasins.com)



Kast Canvas patterned finish basin from Kast Concrete Basins, [kastconcretebasins.com](http://kastconcretebasins.com)



Icone01 monochrome originals toilet from Trone, trone.paris



Vive WC in Indigo by Kohler, kohler.co.in



# STYLISH SEATS

From pop colours to metallic tints, and a tankless one too, our pick of water closets that marry form and function

Callipyge Monochrome Collection wall hung ceramic toilet from Trone, trone.paris



Wall Mounted Tankless WC from Hindware Italian Collection, hindwarehomes.com



Icone01 monochrome originals toilet from Trone, trone.paris



Acacia Supasleek Square Wall Hung WC from American Standard, americanstandard.in





# Homes



PHOTO ADRIAN GAUT AND DOUGLAS FRIEDMAN

Take a tour of designer Vanessa Alexander's contemporary barn-style home in Malibu with its relaxed-chic vibe that borrows from Dutch and Belgian influences



# CALIFORNIA CALLING

Nestled among oaks and maple trees in Bonsall Canyon, Malibu, the family home of interior designer Vanessa Alexander is a study in sumptuous materials and discreet luxury

WORDS VARUNI MOHAN PHOTOS ADRIAN GAUT AND DOUGLAS FRIEDMAN



The scenic outdoor areas of this private Malibu hideaway feature Shou Sugi Ban cladding on the home's exterior, while large windows and doors lead to the garden, where landscaping has been created by Terremoto Landscape. We spot a pair of Will Gull chairs from Orange



## HOME MALIBU

The poolside features custom daybeds by Vanessa's studio Alexander Designs, and these are shaded by umbrellas from Santa Barbara Designs. The landscaping features layers of trees starting with the grand palms above, olive trees and then greyish white sage



A luxury family home looking on to mountains and trees in glorious, sunny Malibu is where designer Vanessa Alexander lives with her husband, three teenage sons, and dogs. Drawing from Dutch and Belgian influences, this contemporary barn-style home was a comprehensive remodelling of the original house built in the 60s. The result is an extremely elegant and luxurious home, that still feels relaxed and comfortable. The striking and strong facade is crafted with cedar wood cladding with a Japanese-style Shou Sugi Ban charred finish, while the 12-foot high doors and windows maximise connection to the surrounding garden and infuse the house with natural light.

Vanessa and her Los Angeles-based interior design firm, Alexander Design, are known for blending global influences with the California-living aesthetics. Naturally, she's brought this same sense of aesthetic to the design of her own home. It's hardly surprising that she doesn't have any single favourite spot in the house. When asked about it, she says, "It's hard to choose, but our kitchen and family room is very special and is where we spend the bulk of our time. It opens out to our yard and pool in a very transparent way, so even when you are inside, you experience the light and beauty of the verdant surroundings. We also love our master suite as it is incredibly peaceful and intimate, and the bathroom has a beautiful shower that feels as though you are in the garden with doors on both sides."

A collage of sumptuous textures makes this home really inviting. Some examples of these textures include the hand-applied plaster, suede, unfinished wood grain, rattan, and velvet. They all come together in earthy and soothing neutral colours, with moody accents created by large artworks. "We have a few artworks that are very special to us -- a photo by Bill Henson called "Paris Opera" and another work commissioned by us for our bedroom by Alison van Pelt. We also have a painting by our close friend Heath Ledger, that he gave us before he passed away... It's not only stunning, but also very sentimental," she says.

A collage of collectible pieces and customised furniture and lighting are peppered through the abode. This house is definitely a vibe, and allows the imagination to wander as you think about having breakfast under the kitchen skylight, languorous afternoons by the pool, or cosy moments lounging in the living room. ♦ [alexanderdb.com](http://alexanderdb.com)



*Drawing from Dutch and Belgian influences, this contemporary barn-style home was a comprehensive remodel of the original house built in the 60s*



From top: The family room features Swedish chairs by Axel Einar Hjorth from Galerie Half, a massive primitive coffee table from 1st dibs and stools by Green River Project; Home owner and designer, Vanessa Alexander



Above a black brutalist mid-century credenza from Morentz, an artwork titled Paris Opera by Bill Henson holds centre stage in the living room where we spot Marco Zanuso regent chairs upholstered in suede by Adelman, a Charlotte Perriand bench as a coffee table, from Galerie Provenance and Royere Polar Bear couch in Teddy mohair from Pierre Frey. This is illuminated by vintage radial chandelier from Galerie Half



## HOME MALIBU

Relaxation has been prioritised in all seating choices like this tufted day bed that is an ideal reading and lounging spot as you look out into the courtyard. A luxurious plaster finish by Kamp Studios, done throughout the home brings the interior architecture to life





*“It’s hard to choose, but our kitchen and family room is very special and is where we spend the bulk of our time. It opens out to our yard and pool in a very transparent way so even when you are inside, you experience the light and beauty of the verdant surroundings.”*



From top: The kitchen's dining area features bar stools by Alexandra Kohl & JM Szymanski, with a custom pendant light fixture by Alexander Design; In the formal dining room, the ceiling has custom wood beams by PSS Design Cult and an imposing early 20th century French farm table paired with chairs by Pierre Jeannerette, both from Galerie Half and floor lamps by Tito Agnelli from Morentz







A painting by Alison Van Pelt in the master bedroom compliments the soothing soft grey colour palette of the space. This room has a custom bed, side table and bedside lamps all by Alexander Design, while the floor is draped with a luxurious cashmere mohair rug by Woven Accents



Pure white ceramic vases from West Elm, westelm.in



Wrought iron vintage 2-tier chandelier from Desertcart, desertcart.in

Parentesi light by Achille Castiglioni & Pio Manzù for Flos, professional.flos.com/en/global/

# inspired picks

Solid black round ottoman with wooden legs from Wall Mantra, wallmantra.com



Colton 3-seater sofa in Gir Ivory from Gulmohar Lane, gulmoharlane.com

Graphic sideboard from Ethnicraft, available at Amara, amara.com



Deodar sofa 3-seater sofa in Gir Ivory from Gulmohar Lane, gulmoharlane.com



The Teak & Cane bench from Phantom Hands, phantomhands.in



The living room is finished in a neutral palette with tufted sofas, wall panelling with moulding and a vintage chandelier to give a chic Parisian vibe. Framed prints from The Kuber add a touch of quirk to the bookshelf

# LIKE A COOL BREEZE

Abundant natural light and a soothing neutral palette define this serene city apartment designed by Siddharth Punjabi of SP Designs

WORDS PRAGNYA RAO PHOTOS AND STYLING KUBER SHAH





**W**hen actor Krystle D'Souza first bought this 1,500 sqft, two bedroom apartment, it was a bare shell. "I wanted a very peaceful, warm and homely space, something I could wake up to everyday and not get tired of seeing at all. That's why we decided to keep everything muted, soft and easy on the eye," she says on minimal aesthetic of the space, "Less is more." She roped in Siddharth Punjabi to translate her dream into reality. Modern meets vintage in this home, which stays on course an elegant path but with its share of fun quirky elements. "We wanted to maximise the natural light that streams in all day," says Siddharth, which also explains the material and colour palette that is a mix of soft beige, warm woods and powder blue.

You enter the home through a big, black panelled door that opens into a passage leading to the kitchen. The sliding door fitted with fluted glass gives a hint of what's in store ahead. The living and dining space was remodelled as a large seamless space since Krystle often has people over, "I love entertaining friends and family and the bar area along with the living and dining is perfect," she says. "Personally, I prefer my space much like how I dress - comfortable and easy on the eye. I love people who are warm and simple," and this translates into the decor of her home as well. The passage in the living takes you to the master bedroom, walk-in-wardrobe, and the master bathroom. "We



Krystle D'Souza in her master bedroom (FACING PAGE) A cabinet finished in teak holds vases from Kolus while framed photo prints from The Kuber makes for an interesting backdrop

had to let go off an extra bathroom which gave us a cove to fit in the walk-in wardrobe. There's a cosy den, which doubles up as a makeup room when required," shares Siddharth.

The house draws from a neutral palette, earthy tones being the dominating colours. Simple moulding on wall panelling painted taupe along with vintage lights add a Parisian-chic vibe while floral wallpaper in the master bedroom creates a soft, feminine space. "I love spending time in the balcony but if you ask me, the walk-in-wardrobe has to be my favourite space in the house. It is something I have wanted for a while," reveals Krystle. ♦ **Instagram:** @siddharthpunjabidesigns





The six seater dining table helps accommodate additional seating when entertaining while the mirror makes the space appear larger

*Personally, I prefer my space much like how I dress - comfortable and easy on the eye*



From top, The bar is finished in fluted stripes creating a stark contrast against the taupe coloured walls; The master bathroom is monochromatic with hints of wood for warmth







The master bedroom has a soft blue, floral wallpaper that adds a feminine touch whereas the walkin-wardrobe was modelled in a space that was initially an additional bathroom

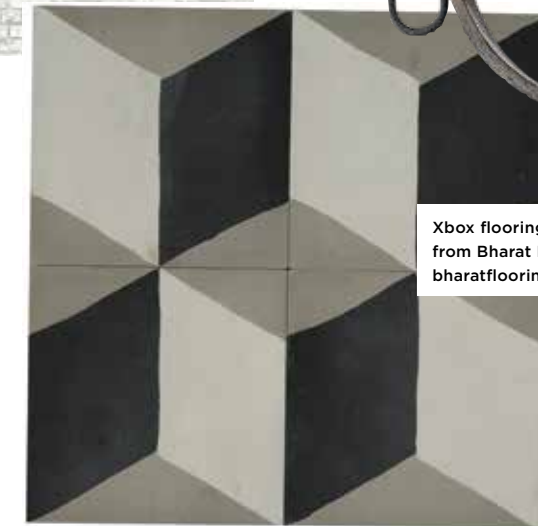


Brick Lane wallpaper from Asian Paints, asianpaints.com



Merlot 5-light distressed black and wood farmhouse chandelier from Kichler, kichler.com

# inspired picks



Xbox flooring tile from Bharat Floorings, bharatfloorings.com



Gladom tray table from Ikea, ikea.com/in



Chandigarh chair from Home Canvas, homecanvas.com



Mid-century media console in Acorn, from West Elm, westelm.in



Mid-century expandable dining table in Walnut, from West Elm, westelm.in



Classic Chesterfield sofa collection from Gulmohar Lane, gulmoharlane.com



# VISTAS IN THE SKY

Perched on the 29th floor this classic contemporary bachelor pad in Bengaluru, by Ruthvik Prakash of Architecture Saga draws inspiration from his childhood, spent in the coffee plantations of Chikkamagaluru

WORDS VARUNI MOHAN PHOTOS SHAMANTH PATIL J

The living room seating cluster features a sectional sage green leather sofa from W.Schillig, mid-century style armchairs from Simply Sofa, that's paired with a solid wood centre table from Fabindia. The wall has been clad with wainscoting finished in white PU and showcases a commissioned 3D artwork by Studio Smitamoksh, illuminated by decorative wall lights from The White Teak Company







The foyer walls are finished in stucco finish by Limocoat, while carefully curated objets d'art create visual interest. The mirror is from Karianch, vase is from Metercube and the orange chairs are from MIMI Homes



The entryway of the passage is dressed in Neo-classical details, which leads to a Mysore painting of Goddess Lakshmi by Uthsavi Pramod

**A**ptly christened 'The 29th', this 2500 sq.ft apartment boasts stunning views from its vantage location in a high rise building in the Garden City. Bathed in sunlight and facing a scenic lake, this space is designed by Ruthvik Prakash of Architecture Saga, as his second home. It tells a story of classic contemporary design, peppered with plush furniture and interesting art. Ruthvik tells us, "My interest in the fusion of two different styles of architecture-classic and modern; laid the foundation of the design concept for this luxury apartment."

Having spent his formative years in his family home among the coffee plantations of Chikkamagaluru, it was important for Ruthvik to infuse elements that reminded him of the lush tropical scenery of this region. Muted shades of green appear consistently through the home, the artworks show elements of foliage or rural landscapes, and

plants are placed strategically to remind him of his roots. His favourite spot to relax after a long day is on the sage green leather sectional sofa in the living room, that's styled against a white wainscoting panelled wall, with a 3D tropical artwork by Studio Smita Moksh, overhead. From here he looks onto the balcony which is decorated with succulents placed on huge metal spoons, owned by the family dating back to 1950s. The balcony seamlessly opens out from the living room area for an indoor-outdoor vibe and this open plan follows through into the dining and kitchen area, giving a sense of a spaciousness, that's amplified with stunning views of the lake.

Classic furniture in solid wood evoke the past sensibilities of Ruthvik's ancestral home, but this is expressed in a modern language. It easy to spot the melding of contemporary and classic sensibilities even in the art collection of the home, which includes modern pieces as well as traditional Indian forms, like a large Mysore painting of Goddess Lakshmi and a Pattachitra painting from Odisha. His love for warm lighting is declared through a curation of decorative lights, like the ensemble of pendant lights in the dining area or the crystal wall sconce in the living room, which brings the home to life after dark. "As this is a bachelor's pad, the concept of 'less is more', plays a key role in defining the theme, colour and material palette. The spaces are kept very subtle with a lot of whites, earthy tones and balanced with vibrant artworks and furnishings," he says. Ruthvik's design sensibility leans into subtlety, yet this home manifests modern opulence. His upbringing close to nature has left a deep impression and we can see the influence in his design decisions in the home. ♦  
Instagram: @architecture.saga





The open layout kitchen features a combination of teak wood and aviator grey PU, along with fluted glass and grey subway tiles, creating a pleasing interplay of textures and colour



The dining area has a bespoke dining table, sideboard and chairs, that are styled with a carpet from Jaipur Rugs and on the main wall we see a Pattachitra painting from Odisha. The cluster of decorative glass pendant lights overhead is from Prism Lights



*Classic furniture in solid wood evoke the past sensibilities of Ruthvik's ancestral home, but this is expressed in a modern language*



Amsterdam sofa from BoConcept, [boconcept.com/hi-in](http://boconcept.com/hi-in)



Sculptural glass 3-Light globe chandelier in Metallic Ombre from West Elm, [westelm.in](http://westelm.in)



Rezelo Collection, luxury fiberglass planters from Bonasila, [bonasila.com](http://bonasila.com)

# inspired picks



Glass decanter from Vista Alegre, [vistaalegre.in](http://vistaalegre.in)



Eichholtz Solaris Mirror from Sweetpea and Willow, [sweetpeaandwillow.com](http://sweetpeaandwillow.com)



The TIP armchair from House of AC, [houseofac.in](http://houseofac.in)



Melvan light from Jainsons Emporio, [jainsonsemporio.com](http://jainsonsemporio.com)



Coffee table from Fabindia, [fabindia.com](http://fabindia.com)



L'amour rug from Hands Carpets, [handscarpets.com](http://handscarpets.com)



Mondrian modular sofa by Jean-Marie Massaud for Poliform, [poliform.it](http://poliform.it)



San Diego leather dining chair from Gulmohar Lane, [gulmoharlane.com](http://gulmoharlane.com)



# WHITE WONDER

An all white palette is punctuated with textures and layers to create this zen space by Sanna Daya Hasan and Ashni Tapuria Shah of The Calico Guild

WORDS PRAGNYA RAO STYLING AND PHOTOGRAPHS KUBER SHAH



Neutral upholstered organic furniture forms juxtaposed against the clean lined millwork panels in the living room (FACING PAGE) Each piece of furniture in the home has been meticulously designed to achieve the perfect proportions making them functional while also keeping with the overall palette



Slim metal shelves with a white fluted backing make for an interesting corner in the den



When the couple in their early 30s first saw this apartment, “it felt a bit small, dated and not so well maintained but we fell in love with it, especially the original marble floors, we could see ourselves build a life around this home,” she says. So when she and her husband approached Sanna and Ashni, the brief was simple, “Modern, minimal, no clutter, nothing polarising in terms of design, something that we would love even after 20 years.”

“They were certain that they wanted the colour palette to include white, grey, black and brass. They wanted the design details and elements to remain consistent across the home so that each room flows seamlessly into the next,” explains Sanna. As you enter the home through smoked oak double doors, you walk into a foyer with a cantilevered console and mirror. On the right are the living and dining rooms that lead onto the master and guest bedrooms.

“I think as people we are very particular about the way we use our home and enjoy that everything has its place. For example, we were sure we wanted no wires to be seen or no remotes out of place! We wanted tall ceilings, indirect lighting, easy to clean uncluttered units and shelves, and lots of marble tops complementing our marble floor,” she explains.

“We wanted to capture a feeling of calmness, order and balance with each design decision,” says Ashni, “We balanced the clean lines of the shell and millwork details with organic forms of furniture. Each piece was designed bespoke, allowing us to strike that perfect balance of materials, colour and form.”

Monochrome spaces are hard to pull off. Getting the right shade, pairing it up with the right accent and of course, layering makes all the difference between drab and fab. Because clutter-free was a big one on the agenda, space planning and smart storage solutions became the focus of the initial design process. The concealed bar is an excellent example of this where the couple wanted it to be a focal point when they entertained but wanted it tucked away on an everyday basis. As a result, the design duo fashioned one that would get hidden behind sliding folding doors detailed with millwork.

The entire process was about finding the balance between the couple’s requirements for a minimalist space, their preference of comfort over style and their contemporary sensibility. ♦

[thecalicoguild.com](http://thecalicoguild.com)



The play of light in the master bedroom, this frame encapsulates the colour palette of the home





(Clockwise, from top) The cantilever home office desk set off from the media unit, styled with a statement brass lamp; A bespoke nightstand with a pop of brass and soft neutrals and textures in the guest bedroom; A fluted cantilever media unit seamlessly connects to a row of wardrobes finished with custom black hardware; The statement bar, neatly tucked away behind sliding folding doors, detailed with millwork



*We balanced the clean lines of the shell and millwork details with organic forms of furniture*



Barefoot luxury guest bathroom finished in large format stone finished tiles, juxtaposed with Statuario marble for the counter tops and porcelain mosaic tiles on the accent wall



Enola 2-piece sectional sofa with chaise from Ashley Furniture Homestore available at Dash Square, store. ashleyfurniture.in



Amoenus Soft from Maxalto, available at Scala Home, maxalto.com

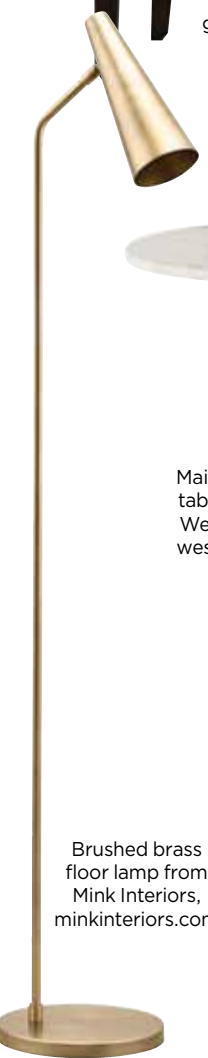


Berlin armchair in Gir Ash from Gulmohar Lane, gulmoharlane.com



Lila upholstered dining chair, from West Elm, westelm.in

# inspired picks



Brushed brass floor lamp from Mink Interiors, minkinteriors.com



Maisie side table from West Elm, westelm.in



Wooden console in reclaimed teak from The House Of Things, thehouseofthings.com



Chamarre oval coffee table in black finish from Pepper Fry, pepperfry.com



Eichholtz Vista Grande lounge sofa from Sweetpea and Willow, sweetpeaandwillow.com



# Lifestyle



PHOTOGRAPH THE KAHANI PARADISE

Beat the heat with delicious sorbets scooped by Swayampurna Mishra, travel across the mountains to a serene getaway in South of India, and come right back, just in time to lay out a sumptuous table, a la Maison Margaux style



# FREEZE FRAMIE

Summer's here and what better time than now to whip up those granitas and sorbets? Chances are, like us, you too have indulged in endless scrolling of Swayampurna Mishra's drool worthy Instagram handle, @lapetitchef. The author of My Indian Kitchen and founder, owner of Lapetitchef, she shares with us easy to make, and easier to impress recipes that will help you make frozen desserts that taste as good as they look (maybe even better).



## Buttermilk Honey Sorbet

### INGREDIENTS

- 500 ml buttermilk
  - 4 tbsp organic honey
  - 2 zest of lemon
  - 1 tsp Roasted cumin powder
  - 2 tbsp fresh coriander leaves, finely chopped
- For the tempering:
- 1/2 tsp mustard seeds
  - few sprigs of fresh curry leaves

### FOR PLATING:

- 1 peach sliced
- caramel tuile (toffee candy melted into a crisp, flat structure)

### INSTRUCTIONS

#### For the sorbet

- Whisk together the honey and buttermilk till its thoroughly mixed. Add the lemon zest and remaining ingredients. Taste, add salt or honey as per taste. Pour it into silicon moulds or any mould of choice. Freeze overnight.

#### For serving

- Temper the mustard seeds and curry leaves in a little oil and pour it over the sorbet once the oil cools down a little. Dust with more cumin powder and garnish with caramel tuile and peach slivers. Serve immediately.

#### Recipe Notes

- For the best result, use a chilled plate or bowl while serving.



RECIPES AND PHOTOGRAPHS COURTESY SWAYAMPURNA MISHRA



## Strawberry Sorbet

### INGREDIENTS

- 500 gm fresh strawberry, quartered
- 150 ml honey, or use stevia for a vegan alternate
- 1 tbsp lemon juice
- 1/2-inch fresh ginger root grated
- 8-10 fresh mint leaves, chopped into tiniest bits
- 2 tbsp chia seeds for garnish
- 60 ml vodka optional

### INSTRUCTIONS

- Puree all the ingredients except lemon juice and mint leaves. Once smooth, strain the puree into a large bowl. Add the lemon juice and mint leaves, stir through well. Taste and add more lemon juice or honey depending on how you like it.
- If adding alcohol, add now and mix well. Pour it into a freezable air tight container. Cover and freeze for an hour till the sides start setting.
- Once it starts setting, simply pop it in your ice-cream machine and churn for 30-40 minutes for a soft serve or freeze for a couple of hours if you like it more set.
- Garnish with some chia seeds, mint leaf before serving. Enjoy!



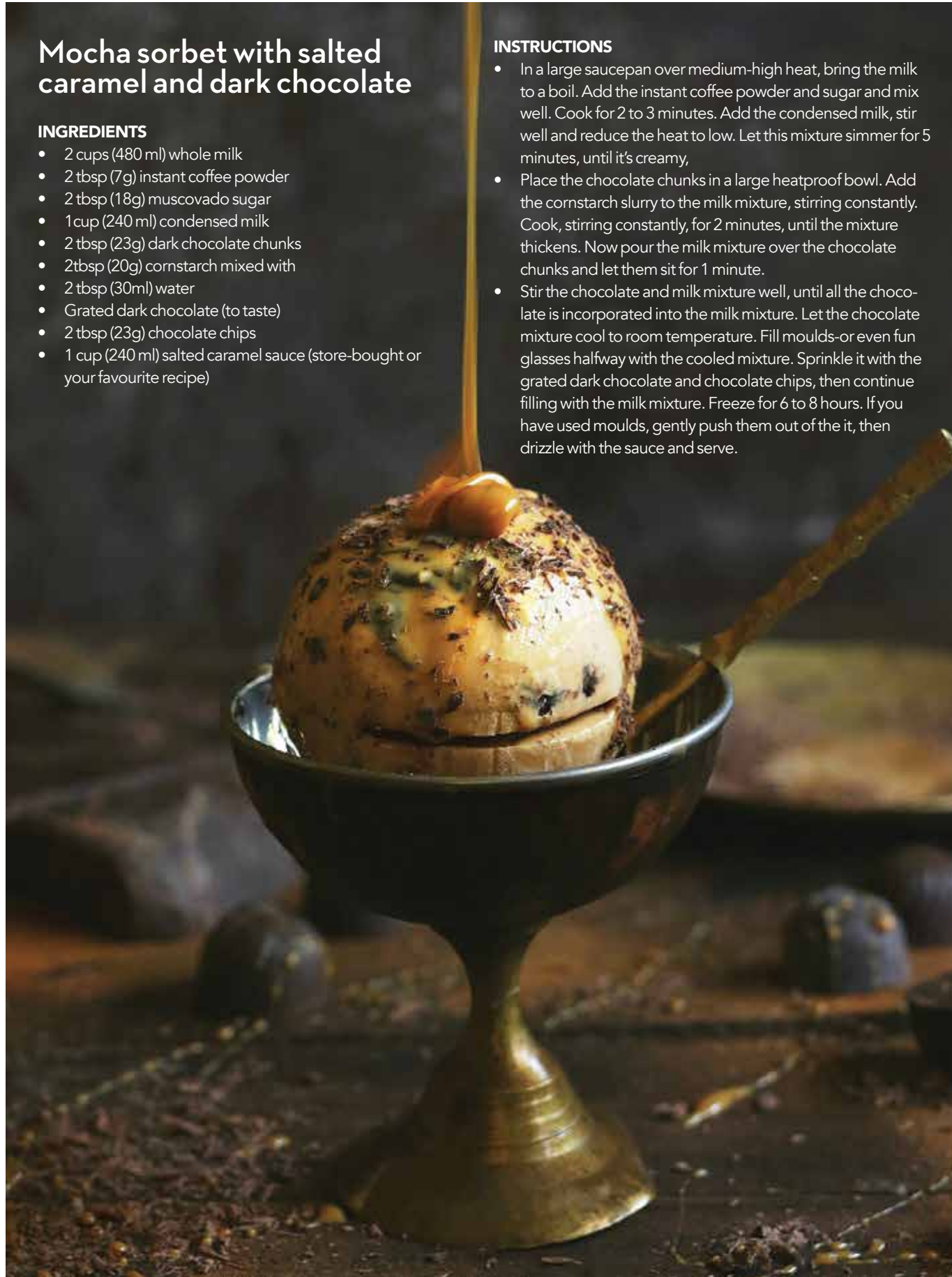
## Mocha sorbet with salted caramel and dark chocolate

### INGREDIENTS

- 2 cups (480 ml) whole milk
- 2 tbsp (7g) instant coffee powder
- 2 tbsp (18g) muscovado sugar
- 1 cup (240 ml) condensed milk
- 2 tbsp (23g) dark chocolate chunks
- 2tbsp (20g) cornstarch mixed with
- 2 tbsp (30ml) water
- Grated dark chocolate (to taste)
- 2 tbsp (23g) chocolate chips
- 1 cup (240 ml) salted caramel sauce (store-bought or your favourite recipe)

### INSTRUCTIONS

- In a large saucepan over medium-high heat, bring the milk to a boil. Add the instant coffee powder and sugar and mix well. Cook for 2 to 3 minutes. Add the condensed milk, stir well and reduce the heat to low. Let this mixture simmer for 5 minutes, until it's creamy,
- Place the chocolate chunks in a large heatproof bowl. Add the cornstarch slurry to the milk mixture, stirring constantly. Cook, stirring constantly, for 2 minutes, until the mixture thickens. Now pour the milk mixture over the chocolate chunks and let them sit for 1 minute.
- Stir the chocolate and milk mixture well, until all the chocolate is incorporated into the milk mixture. Let the chocolate mixture cool to room temperature. Fill moulds-or even fun glasses halfway with the cooled mixture. Sprinkle it with the grated dark chocolate and chocolate chips, then continue filling with the milk mixture. Freeze for 6 to 8 hours. If you have used moulds, gently push them out of the it, then drizzle with the sauce and serve.



## Khatta Meetha (Sour and Sweet) Mango Sorbet

### INGREDIENTS

- mix of ripe and slightly under-ripe mangoes
- juice of a lime
- ginger to taste
- mint to taste
- green chilli to taste
- rock salt to taste

### INSTRUCTIONS

- Purée the mangoes (important to have a mix of ripe and slightly under-ripe mangoes for this), lime juice, ginger, mint, a little bit of green chilli and rock salt.
- Mix it. Pour it into hemisphere moulds. Chill till set.
- For the plating, fill chopped bits of mango between two hemispheres, dress it with chilli and lime zest. You could also sprinkle red chilli powder and Himalayan pink salt flakes just before eating.



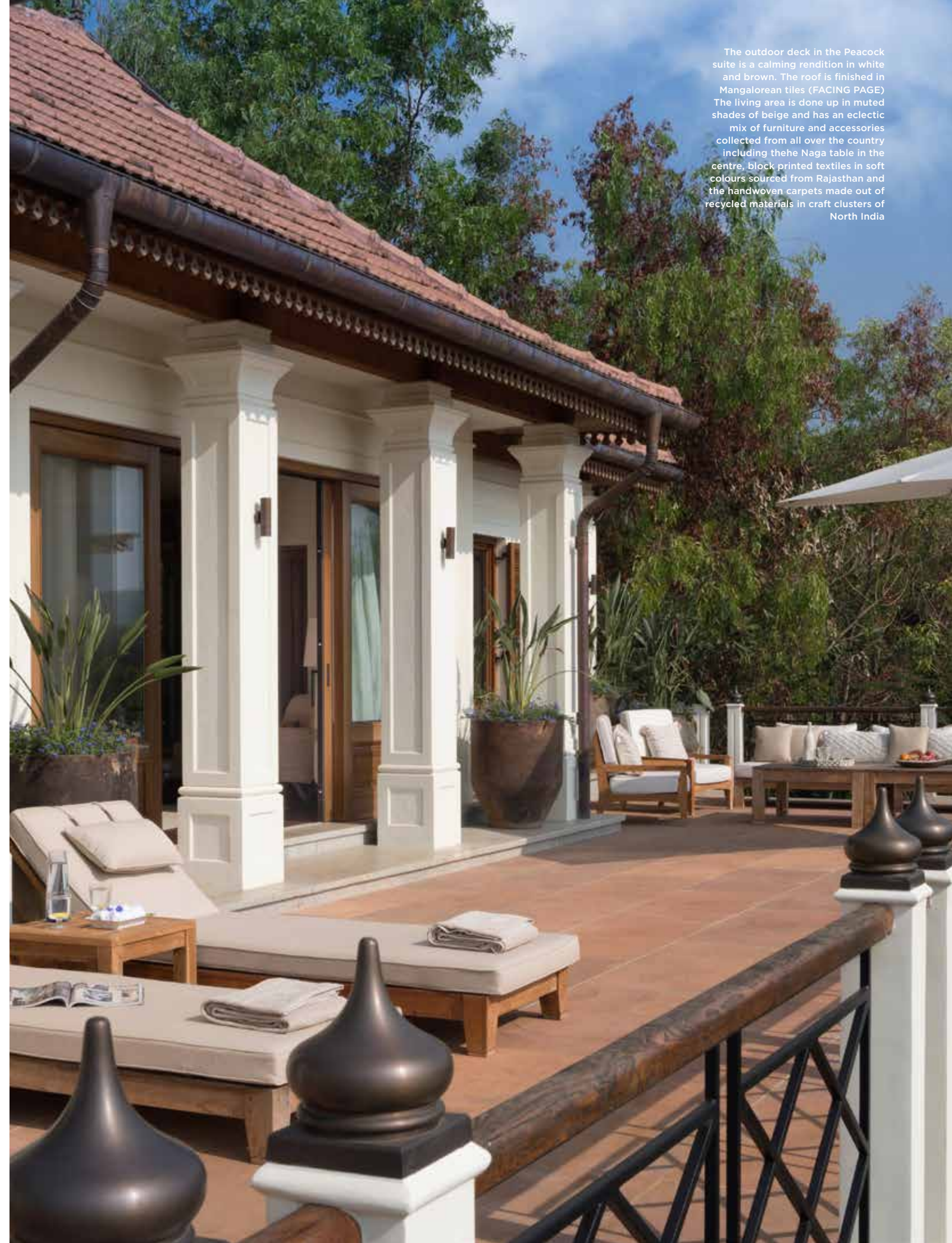




# Mountain Magic

An ode to Indian craftsmanship and Thai architecture, this expansive property in Gokarna designed by architect Philip Syborn is built on principles of sustainability

PHOTOS KAHANI PARADISE



The outdoor deck in the Peacock suite is a calming rendition in white and brown. The roof is finished in Mangalorean tiles (FACING PAGE) The living area is done up in muted shades of beige and has an eclectic mix of furniture and accessories collected from all over the country including the Naga table in the centre, block printed textiles in soft colours sourced from Rajasthan and the handwoven carpets made out of recycled materials in craft clusters of North India



**N**estled in the picturesque coastal town of Gokarna, Karnataka is Kahani Paradise, spread across a lush 20-acre estate of garden, forest and farm. As you make way into the property, a tropical garden gives way to an orchard of coconut, betelnut and banana trees. Designed by architect Philip Syborn, of Syborn+Atkinson, this was meant to be a second home for the Bellm family, who have now opened their doors to people to come experience the estate. The family was keen that the space reflect their love for Indian artefacts and traditional Thai architecture.

One of the key guiding principles of the entire design scheme is sustainability. Site sensitivity plays a huge role in the process where the architecture itself and materials used are ones that are best suited to the topography of the region. Given that the site is at the heart of the humid region of the country, natural ventilation was integrated at the design stage. Each material has been thoughtfully chosen, for example, the Mangalore tiles on the roof not only makes it visually appealing but is also apt for the coastal weather.

Each suite in the property has a unique story to tell, and is adorned with unique Indian artefacts and antiques, showcasing superior craftsmanship through handcrafted products and lesser-known art forms seen across India. Antique handcrafted doors and wooden high ceilings complement the tastefully designed interiors, fitted with customised textile tapestries and rugs. The living area is peppered with an eclectic mix of furniture and accessories collected from all over the country - from the Naga table in the centre, block printed textiles in soft colours sourced from Rajasthan and the handwoven carpets made out of recycled materials in craft clusters of North India.

No matter which part of the property you are in, there's always a thoughtful detail, a breath-taking view and a wholesome experience awaiting you. ♦ [kahaniparadise.com](http://kahaniparadise.com)



From top: An archway leads to the luxurious bath area in the Queen's Palace suite; A wooden bed with cane headboard sits under a colonnade with a daybed at its foot giving it a sense of regalia



From top, The dining room is furnished with a long wooden, community table with antique handcrafted doors making for the perfect backdrop; The Garden suite is cocooned in wood from the hardwood flooring to the panelling on the ceiling and a double height antique carved headboard





# Summer on a plate

Breezy prints, bright fresh florals and delicate details - dress up your table with these easy tips from Louisa Preskett Mobbs, creative director of Maison Margeaux

A celebration table should always begin with laying the table linen. This provides the perfect colourful backdrop to everything and can make the simplest of tableware look amazing instantly, if you're working with a theme this can really bring it to life.

Always work with the 'rule of three' to bring a real sense of occasion to your table. Start with a beautiful placemat, in linen or chic wicker, otherwise a charger plate. Add your dinner plate, and finally your pudding (or salad) plate.

Then three glasses, two wine and a water, always with a thin stem and a large pour. Vintage glasses mixed in

with more contemporary colours like our tortoiseshell water glasses make a fun talking point, each glassware will have its own story.

Finally don't overlook your napkins! Fold them into bows, tie with contrasting ribbon, monogram with initials of guests, or little motifs personal to you.

Keep it quite loose with flowers. Hand-picked are often the best from your garden, along with all shapes and sizes of greenery. Use a mix of jugs, vases or little pots don't be too matchy-matchy, instead use lots of little ones along your table. ♦

[maisonmargeauxltd.com](http://maisonmargeauxltd.com)



## SANTORINI STYLE

Bring a slice of the gorgeous Santorini to your table with a mix of colourful lemon plates, white plates with ridges that remind you of stucco walls in Greece, and a placemat with shell trimmings. Pair that with bamboo cutlery and translucent blue glasses. Throw in some fresh oranges and bright florals as a part of your table decor, and you are set.



Rattan shell white placemat, Lemon twig set of 4 salad/dessert plate, L'objet Aegean white dinner plate; all from the Santorini collection





**ENGLISH MEADOW**

Bring a whimsical feel to the dining with this versatile tablescape. The green meadow inspired look is earthy yet fresh and playful. Working with just green and white adds to the au natural look, and details like the cabbage plate and daisies add freshness to the decor.



Green Cabbage charger plate; Green Cabbage dessert plate, White Cabbage dinner plate; all from the English

The Fantasia Acqua Green charger plate; 5 piece Bamboo cutlery set; Dessert plate; all from the Portofino collection



**PORTOFINO PERFECT**

Embrace the holiday spirit of the coastal village with summery colours and a riot of patterns and florals to create this look. Busier the better. Use a paisley-motif tablecloth in mustard yellow and layer it with plates in shades of aqua to replicate the coastal vibe. Honey coloured glasses and large peony-like flowers will add a cheerful feel to the table.





# Refracted love

Iconic design brand, Poltrona Frau celebrated their 110th anniversary with a collaboration with Argentine-Spanish artist, Felipe Pantone with a visually stunning rendition of the classic Archibald chair. We love the gradient of reds, oranges, yellows, whites and blues that resemble the hot and cold temperatures on a heat map. Going all out, the brand used the same type of production reserved usually for small luxury leather goods to print the design directly on to the leather. The slender legs are finished in multicolour natural chrome, which leaves a purplish-blue iridescent finish that simmers under the light.

As a nod to the 110th, only 110 pieces of the Archibald limited edition were produced. [poltronafrau.com](http://poltronafrau.com)

